

DC SIGNAL TRANSMITTER

CSP-VI

FEATURE

- Accuracy: 0.1%
- Wide selection of input / output range
- Dimension small
- Low output ripple
- Dielectric strength 2000 VAC
- High stability & low cost



SPECIFICATION

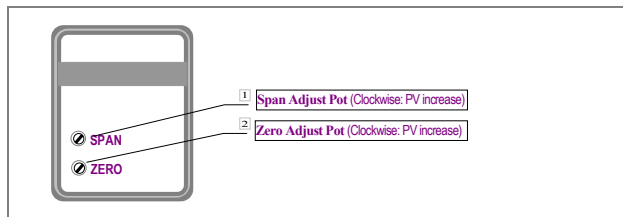
Input Range	Input Impedance	Output Range	Load Resistance
0 ~ 10 mV	≧ 1M ohm	0 ~ 100 mV	≧ 100K ohm
0 ~ 50 mV	≧ 1M ohm	0 ~ 1 V	≧ 50 ohm
0 ~ 100 mV	≧ 1M ohm	0 ~ 5 V	≧ 250 ohm
0 ~ 1 V	≧ 1M ohm	0 ~ 10 V	≧ 500ohm
0 ~ 5 V	≧ 1M ohm	1 ~ 5 V	≧ 250 ohm
0 ~ 10 V	≧ 1M ohm	2 ~ 10 V	≧ 500ohm
1 ~ 5 V	≧ 1M ohm	-10 ~ 0 ~ +10 V	≧ 1K ohm
2 ~ 10 V	≧ 1M ohm	0 ~ 1 mA	≧ 15K ohm
-10 ~ 0 ~ +10 V	≧ 1M ohm	0 ~ 10 mA	≧ 1500 ohm
0 ~ 150 V	≧ 1M ohm	0 ~ 20 mA	≧ 750 ohm
0 ~ 300 V	≧ 1M ohm	4 ~ 20 mA	≧ 750ohm
0 ~ 600 V	≧ 1M ohm		
0 ~ 100 μA	≧ 1000 ohm		
0 ~ 1 mA	≧ 100 ohm		
0 ~ 10 mA	≧ 20 ohm		
0 ~ 20 mA	≧ 10 ohm		
4 ~ 20 mA	≧ 10 ohm		
0 ~ 1 A	0.05 ohm		
0 ~ 5 A	0.02 ohm		

- Accuracy: ±0.1% of R.O.
- Response time: ≧ 400 msec.
- Span adjustment: ≧ 10% of R.O.
- Zero adjustment: ≧ 5% of R.O.
- Output ripple: ≧ 0.1% of R.O.
- Power Supply: AC 115 or 230V ±10%, 50/60 Hz
Option: DC 12V, 24V, 48V ±10%, (Isolated)
- Power consumption: DC 3W, AC 4.5VA
- Operating temperature: 0~60 °C
- Operating relative humidity: 20~95 %RH
- Temperature coefficient: ≧ 100 PPM/°C
- Storage temperature: -10~70 °C
- Isolation: Between Power / Input / Output / Case
- Insulation resistance: ≧ 100M ohm at 500Vdc
- Surge test: 4 KV, 1.2 x 50 μ sec.
- Common mode & differential mode

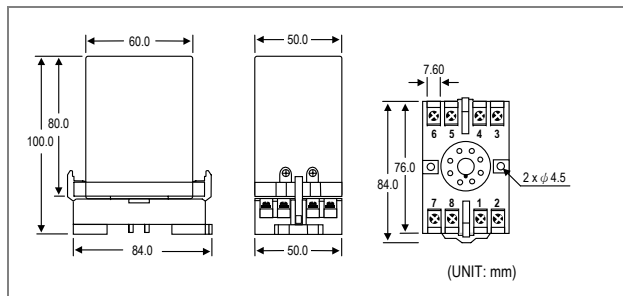
Dielectric Strength: AC 2.0 KV for 1 min
Between Power / Inout / Output / Case

Weight: 360g

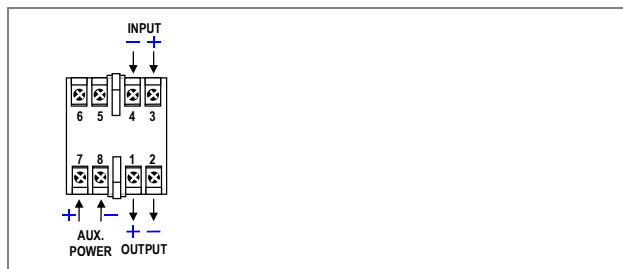
ADJUSTMENT



DIMENSIONS



CONNECTION DIAGRAM



ORDER INFORMATION

