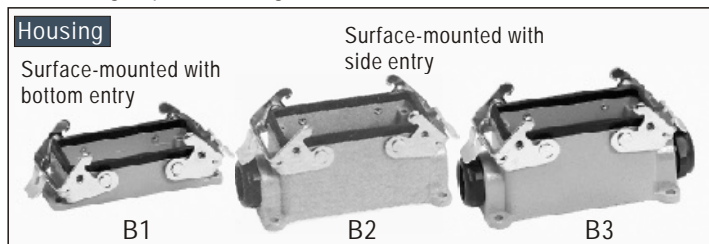


Multipole Connector

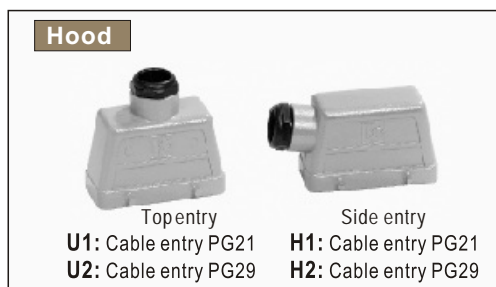


Locking Assembly

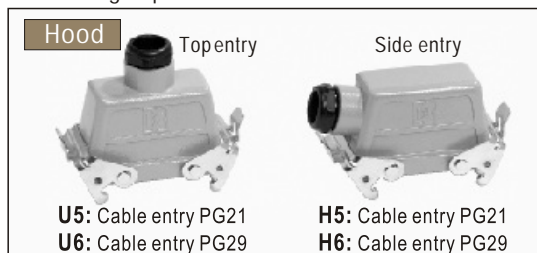
① Locking clip on Housing



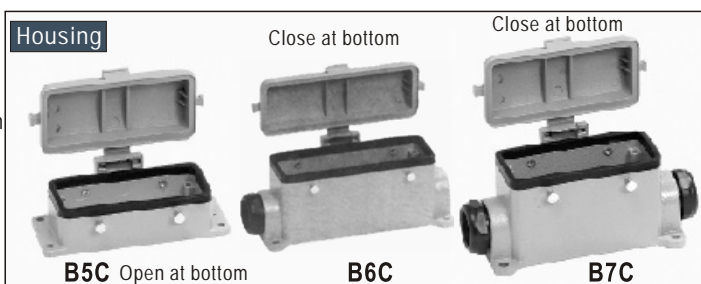
To be fitted with



② Locking clip on Hood



To be fitted with



HOW TO ORDER

Model No.	KM06	M	F	H1	B1
Type	Plug insert	Socket insert	Hood	Housing	

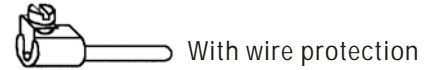
Multipole Connector

DESCRIPTION

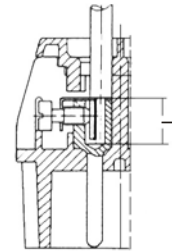
Terminals of type KM03 without wire protection



Terminals of Type KM06, KM10, KM16, KM24, KM32, KM48, KL03, KL06, KL12 with wire protection

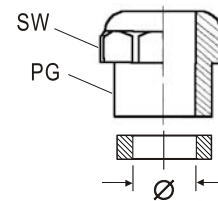


Plug-socket contacts	Thread screws	Test torque kg-cm	Cross section		Stripping length L (mm)
			mm ²	AWG	
KM03 ~ KM05	M3	8	2.5	14	4.5
KM06 ~ KM48	M3	8	2.5	14	7
KL03 ~ KL12	M3	12	6	10	11



Cable Entry Protection

Description	PG11	PG13.5	PG16	PG21	PG29
Clamping Range mm Dia. Ø	5-11	6.5-12.5	9-15	13-20	21-28
SW	20	23	25	30	40



Type	KM	KL
Number of contacts	3, 6, 10, 16, 24, 32, 48 + Earth contact	3, 6, 12 + Earth contact
Rated current	Max. 16A	Max. 35A
Rated Voltage	400V ~600V according to UL, CSA	400V ~600V according to UL, CSA
Dielectric test voltage	3KV 1 minute	3KV 1 minute
Volume Resistance	1MΩ	0.5MΩ
Temperature Range	-40°C ~ +125°C	-40°C ~ +125°C
Protection Category	KM06~KM48 (IP65 when mated) Km03 (Ip54 when mated)	IP65 when mated
Cross section	0.5 ~ 2.5mm ²	1 ~ 6mm ²
Terminal Screws	Steel M3 nickel pated	Steel M4 nickel pated
Protection Cover	(KM06 ~ KM24) Nylon 66.V-0 (KM32 ~ KM48) Aluminum Die-casting alloy	(KL03 ~ KL06) Nylon 66.V-0 KL12 Aluminum Die-casting alloy
Plug and Socket Insert	Fiberglass reinforced polycarbonate V - 0	
Contact elements	Copper alloy	
Contact Surfaces	Hard - Silver - Plated	
Earth Connector Part	Brass Nickel Plated	
Locking Levers	Steel Zinc Plated	
Pressing Lock-Nut	Nylon 66.V-0	
Gaskets	Neoprene (Resistant to oil and ageing)	
Hood and Housing	Aluminum Die-casting alloy	